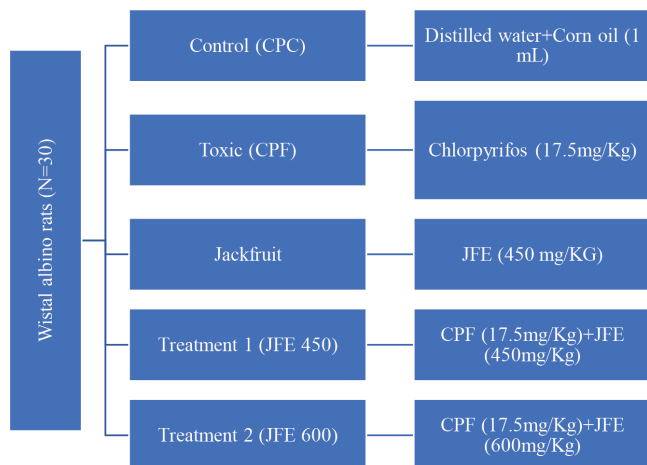


# Is Jackfruit Holding the Key Answer to Male Infertility? Outcomes of a Preliminary Pre-clinical Study

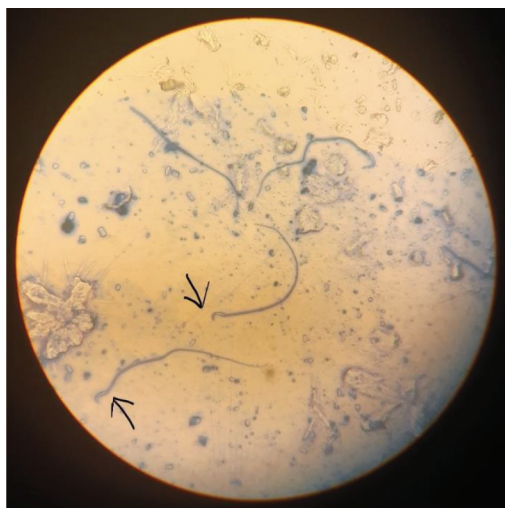
## Supplementary Figures and Table:



**Supplementary Figure 1.** Experimental animal groups (original).



**Supplementary Figure 2.** The sperm motility under high power field (10x) (original).



**Supplementary Figure 3.** Sperm vitality under high power field (10x magnification) (original).

**Supplementary Table 1.** Biochemical analysis (original)

Group	Total Protein [Mean ± S.D.] dl/L	MDA [Mean SD] μmol/L	Catalase [Mean SD] Units/mg
CPC	6.66 ± 0.68	1.930.78	6.49 ± 0.92
CPF	5.41 ± 0.51	15.99 ± 4.0*	2.02 ± 0.28*
JFK	6.13 ± 0.76	1.49 ± 0.29a	6.23 ± 0.78*a
CPF + JFE-450	6.51 ± 0.47*	4.02 ± 1.54a	6.56 ± 0.65*a
CPF + JFE-600	6.59 ± 0.72*	3.2 ± 1.37a	7.23 ± 0.56*a

Total protein- \* denotes p<0.05 for CPF vs JFE-450, JFE-600  
 MDA- malondialdehyde; \* denotes p<0.05 for Control vs CPF; <sup>a</sup> denotes p<0.05 for CPF vs JFK, JFE-450, JFE-600  
 Catalase- \* denotes p<0.05 for Control vs All other groups; <sup>a</sup> denotes p<0.05 for CPF vs JFK, JFE-450, JFE-600.